

Salinity Test Kit

Always remember

1. To wash the test vials properly before test.
2. While matching the colour of the test sample with colour, always place the vial against a white background, to get maximum accuracy.
3. Test the samples as soon as possible after collecting it from the source.



Take 4 ml sample using syringe

Test Procedure:

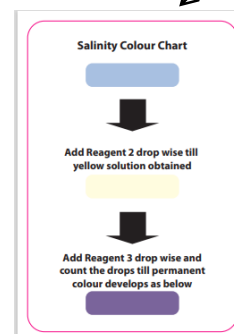
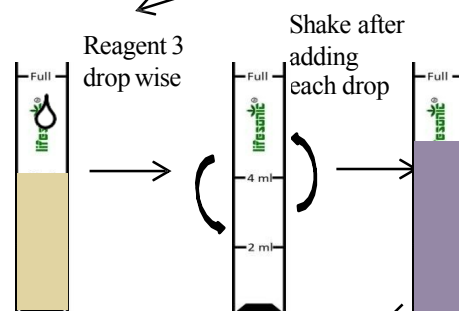
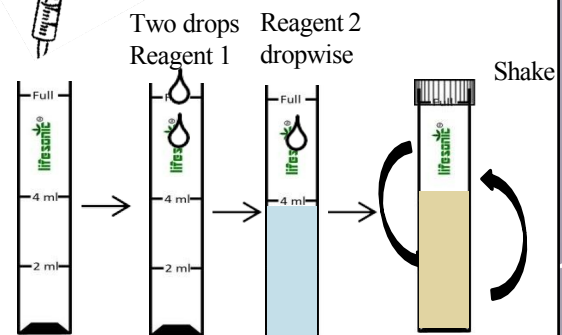
For expected salinity between 0.2-4 PPT

1. Rinse the vial with sample water. Fill the test vial with 4 ml of pond/tank water using syringe.
2. Add 2 drops of **Salinity Reagent 1**, close the cap and mix.
3. If the colour of the test sample turns yellow then skip to step 4 and if colour turns to light shades of blue or pink then add **Salinity Reagent 2** drop wise until the solution turns yellow.
4. Add **Salinity Reagent 3** drop wise until the colour changes to permanent blue purple, count the drops used in this process.
5. Calculate the Salinity in PPT by multiplying number of drops by "0.2"

Note- Development of blue purple colour (end point) after adding just 1 drop of reagent 3 denotes salinity between 0- 0.2 PPT

For expected salinity between 2-40 PPT

1. Rinse the vial with sample water. Fill the test vial with 0.4 ml of pond/tank water using syringe and add 3.6 ml of distilled or pure non saline water if distilled water is not available.
2. } Follow the steps as mentioned above.
3. }
4. }
5. Calculate the Salinity in PPT by multiplying number of drops by "2"



Store at 15-20°C in dry and dark place